

The Role of Measurement for Transforming of Child Welfare Practice

Erwin McEwen, Director

Illinois Department of Children & Family
Services



Evaluation considerations

- Target/goals
- Timing
- Assessment Strategies



Evaluation Targets/Goals

Targets:

- ❑ Casework level
- ❑ Service Level
- ❑ Agency level

Goals:

- ❑ Decision making & planning for services
- ❑ Determining effectiveness of interventions
- ❑ Continuous Quality Improvement

DCFS Evaluation Activities

	Family & Youth	Program	System
Decision Support	Service Planning	Hospitalization – SASS Placement Decision Making - CAYIT	Maps of CANS-assessed Needs and Resources from SPD
Outcome Monitoring	CANS Compare Report Parent Readiness for Reunification Report	Evaluation – SOC Outcomes	Performance Based Contracting in Foster Care & Residential Placement
Quality Improvement	Case Management Supervision	Data Summits for individual programs – CAYIT, IA	Statewide Trauma Plan

Timing: Evaluation as an ongoing process

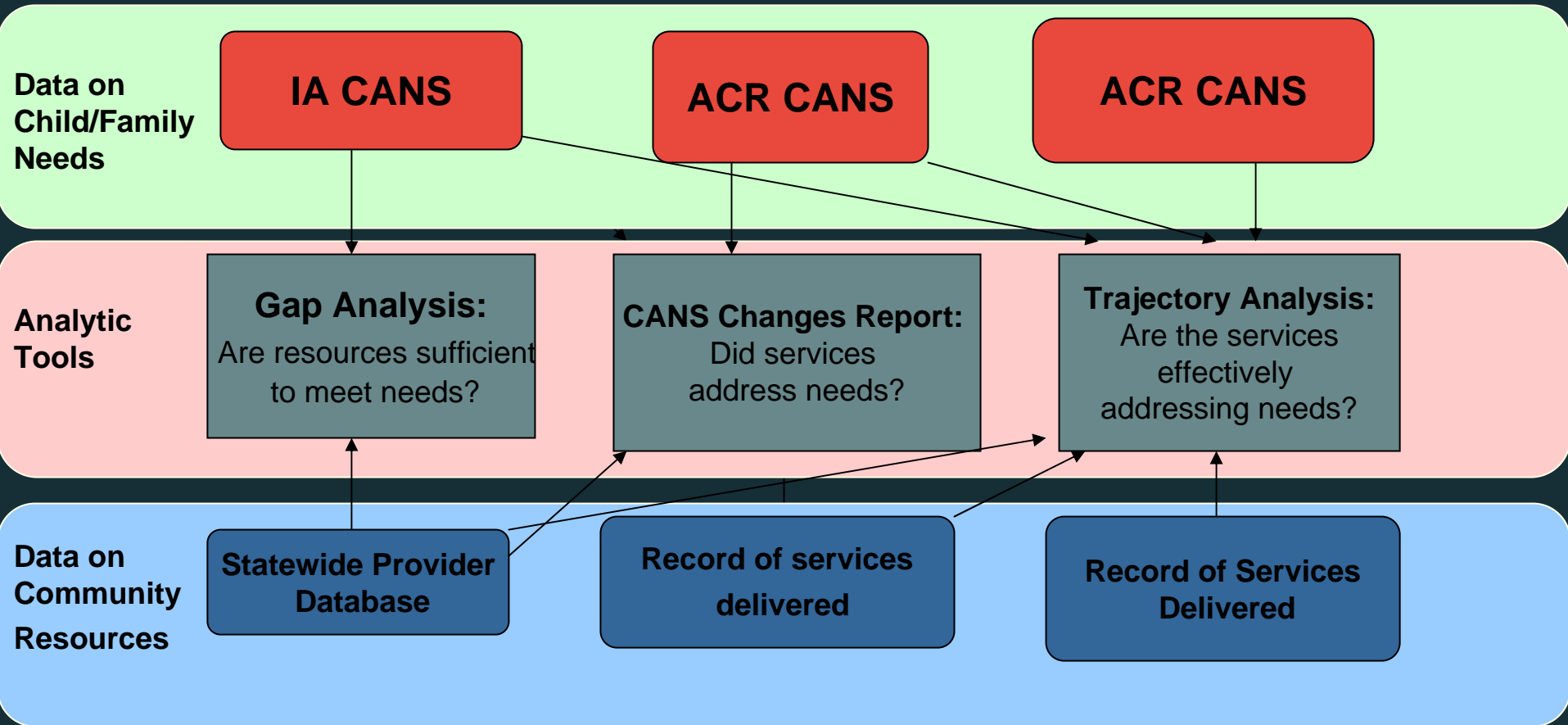
- Initial assessments
- The value of adding subsequent measurements
 - Observing change
 - Predicting outcomes
 - Guiding treatment planning decisions



Initial

6 Months

12 Months





DCFS Criteria for Assessment Strategies

- ❑ Trauma-informed
- ❑ Strengths-based
- ❑ Family-focused

CANS Recommended Services Report

FS ID

6227 S BISHOP ST FL 2
CHICAGO, IL 606362315

VS

CANS Item	CANS Score	Service Type	Date of Assessment
4. Neglect	2		2008-09-17
10. Traumatic Grief/Separation	2		2008-09-17
14. Adjustment to Trauma	2	Individual Counseling/Therapy	2008-09-17
19. Family	2		2008-09-17
21. Educational	3		2008-09-17
22. Vocational	2		2008-09-17
23. Well-being	2		2008-09-17
25. Talents/Interests	2		2008-09-17
27. Community Life	2		2008-09-17
28. Relationship Permanence	2		2008-09-17
29. Family	2	Family Counseling/Therapy	2008-09-17
30. Living Situation	2	Family Counseling/Therapy	2008-09-17
33. Recreational	2	Recreational Activities	2008-09-17
34. Job Functioning	3		2008-09-17
35. Legal	2		2008-09-17
39. School Behavior	3		2008-09-17
40. School Achievement	2	Tutoring	2008-09-17
41. School Attendance	2		2008-09-17
50. Oppositional	2	Individual Counseling/Therapy	2008-09-17
		Family Counseling/Therapy	
58. Anger Control	2	Individual Counseling/Therapy	2008-09-17
		Anger Management/Conflict Resolution	
90. Educational Attainment	2		2008-09-17

CANS for Case Work Staff Website

IDCFSCANS | CWS

Logged on: ssmith : [Logout](#)

CANS History for Field, Sally

The table below lists all CANS for the child/youth you have selected.
To view a particular CANS, click on the CANS Date

CANS Context	Completion Status	Assessor	Assessment Date	CWS 1.1 Compare
CWS	Pending	Smith, Joe	07-18-2008	<input type="checkbox"/>
RTOS	Submitted	Rogers, Will	04-01-2008	<input type="checkbox"/>
CAYIT	Submitted	Jones, Jill	10-13-2007	<input type="checkbox"/>
IA	Submitted	James, Jane	07-23-2007	<input type="checkbox"/>

Exit

Compare

CANS Comparison

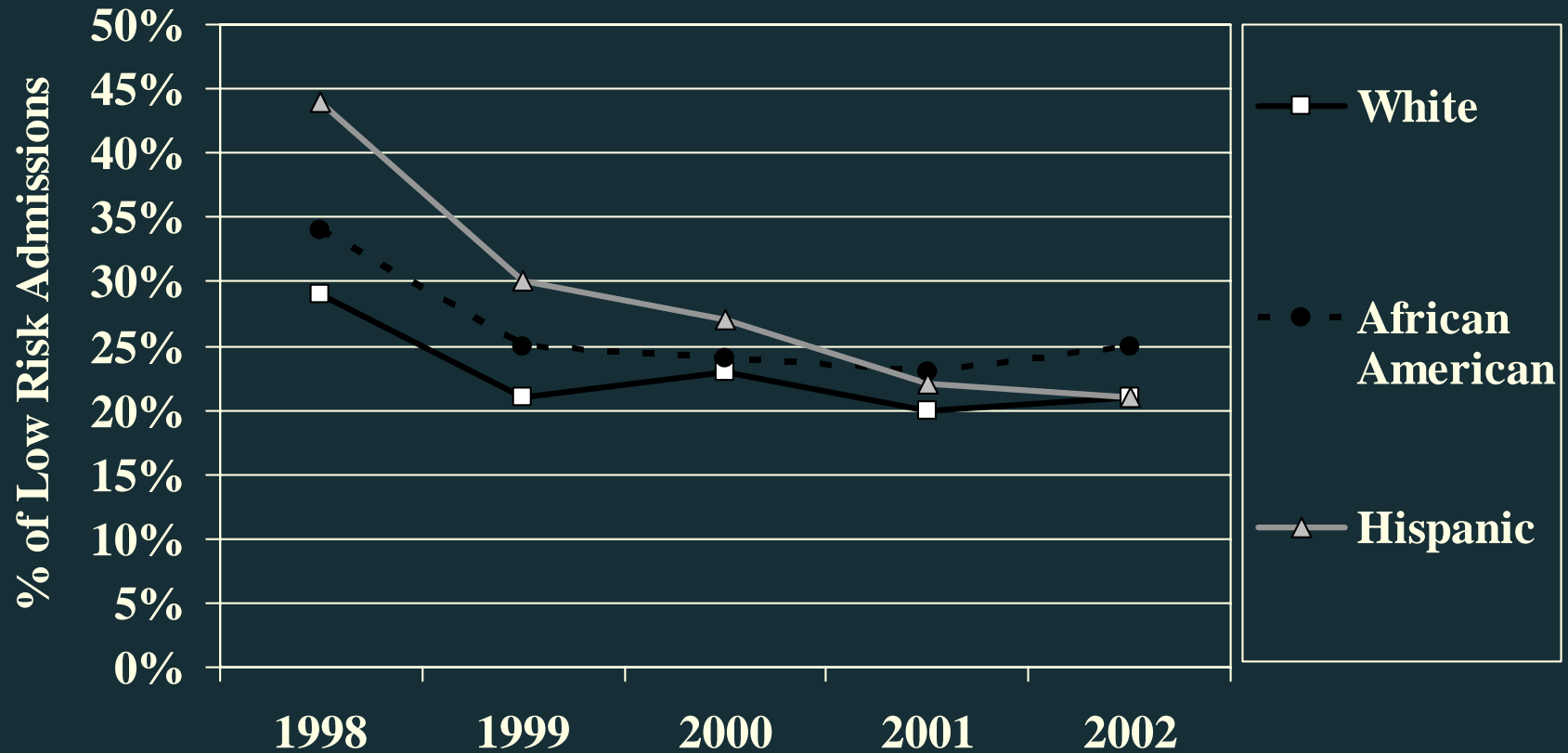
Name: Sally Field

CYCIS ID: 12312312

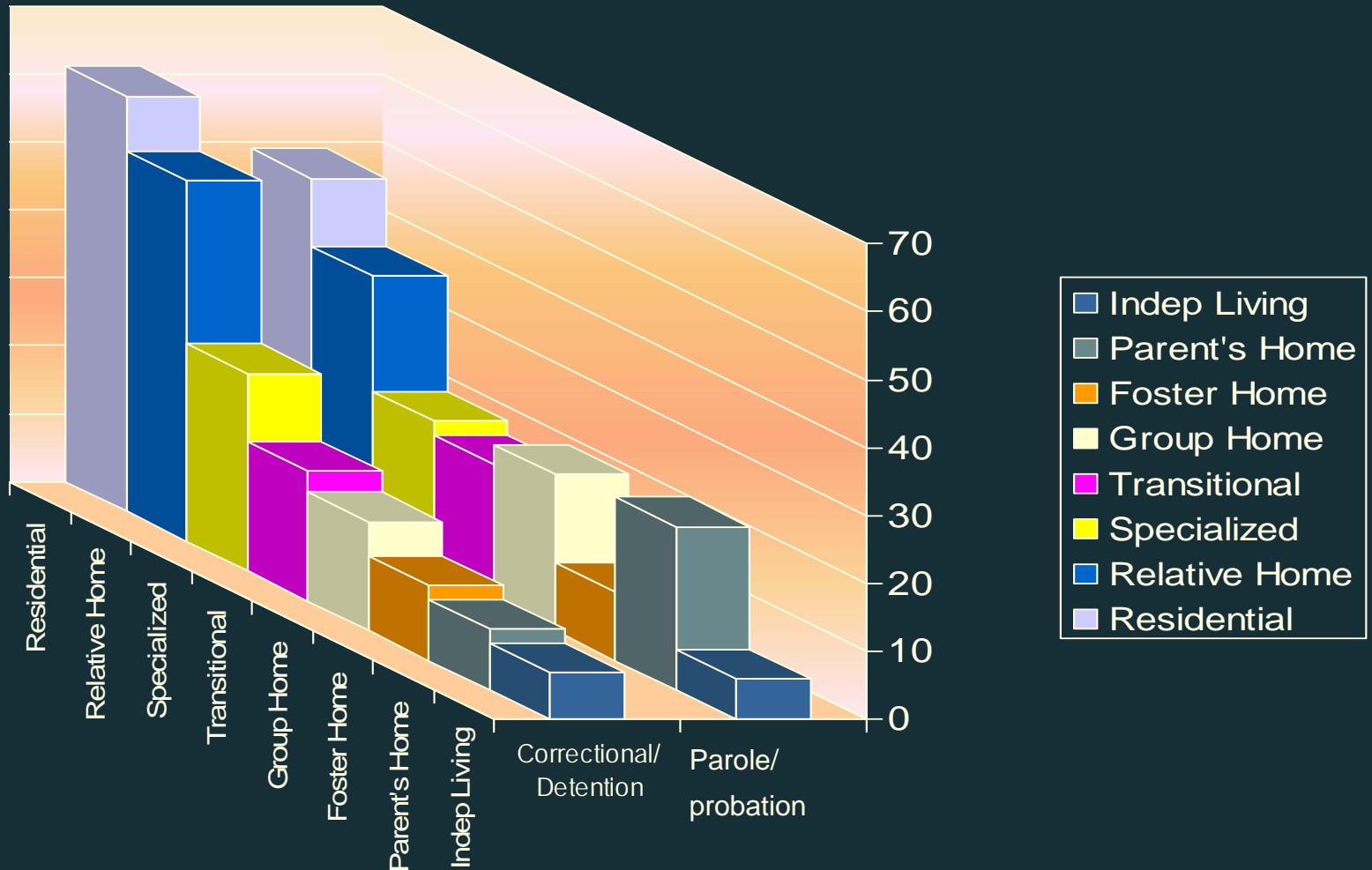
CANS Context	CAYIT	IA
Status	Submitted	Submitted
Assessor	Screener7	IAUser 2343
Assessment Date	04-01-2008	10-13-2007
CANS Version	1.0	1.0
Trauma	* = notes	
1. Sexual Abuse	2 *	1
2. Physical Abuse	2 *	1
3. Emotional Abuse	1	1
4. Neglect	1	2 *
5. Medical Trauma	1	0
6. Witness to Family Violence	0	0
7. Community Violence	1	1
8. School Violence	1	1
9. Natural or Manmade Disasters	0	0
10. War Affected	0	0
11. Terrorism Affected	0	0
12. Witness/Victim to Criminal Activity	0	1
13. Parental Criminal Activity	0	1
Traumatic Stress Symptoms		
14. Adjustment to Trauma	1	2 *
15. Traumatic Grief/Separation	0	1
16. Reexperiencing	1	1
17. Avoidance	0	1
18. Numbing	1	0

Decision making: Percent of hospital admissions that were low risk by racial group

Adapted from Rawal, et al, 2003



Understanding Needs: Wards Placements Pre/Post Incarceration

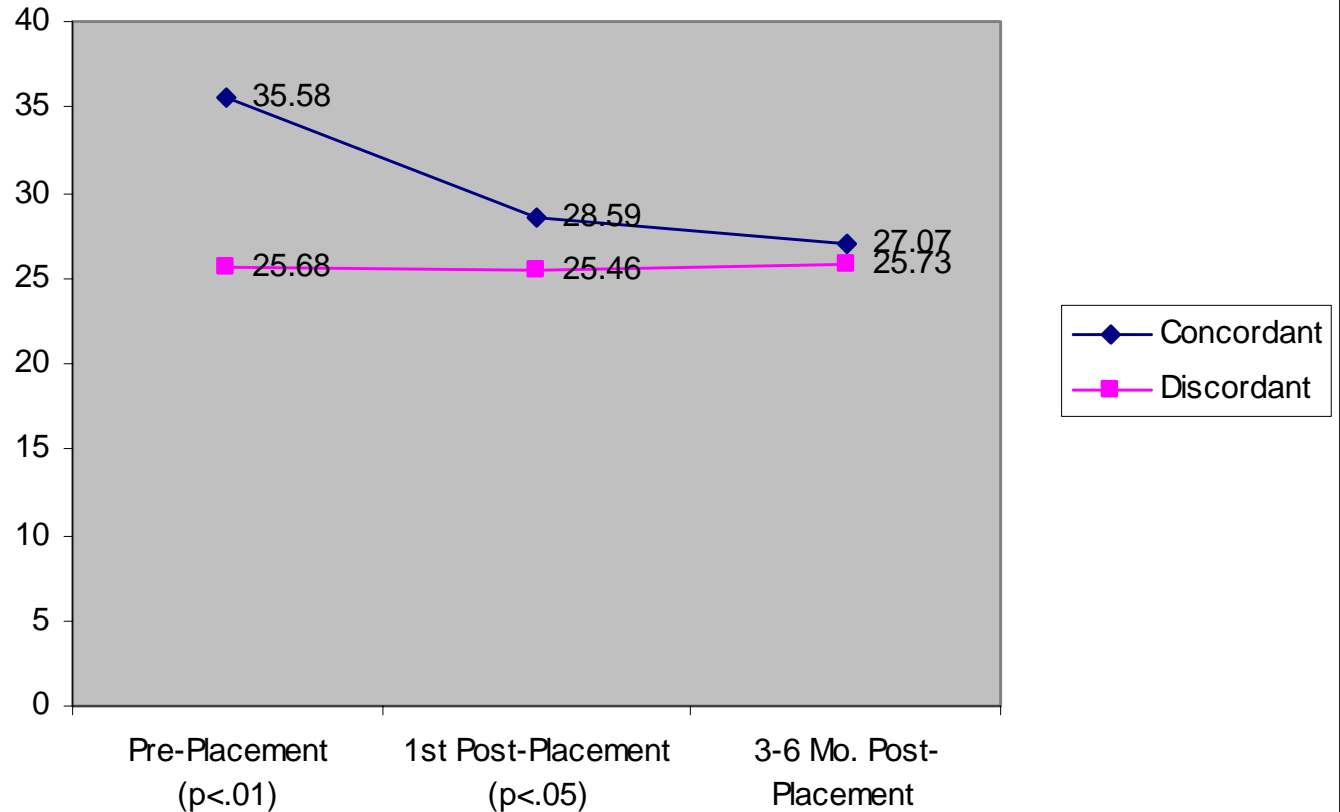


Decision Support: Change of CANS

Domain Scores Over Time in Residential Settings

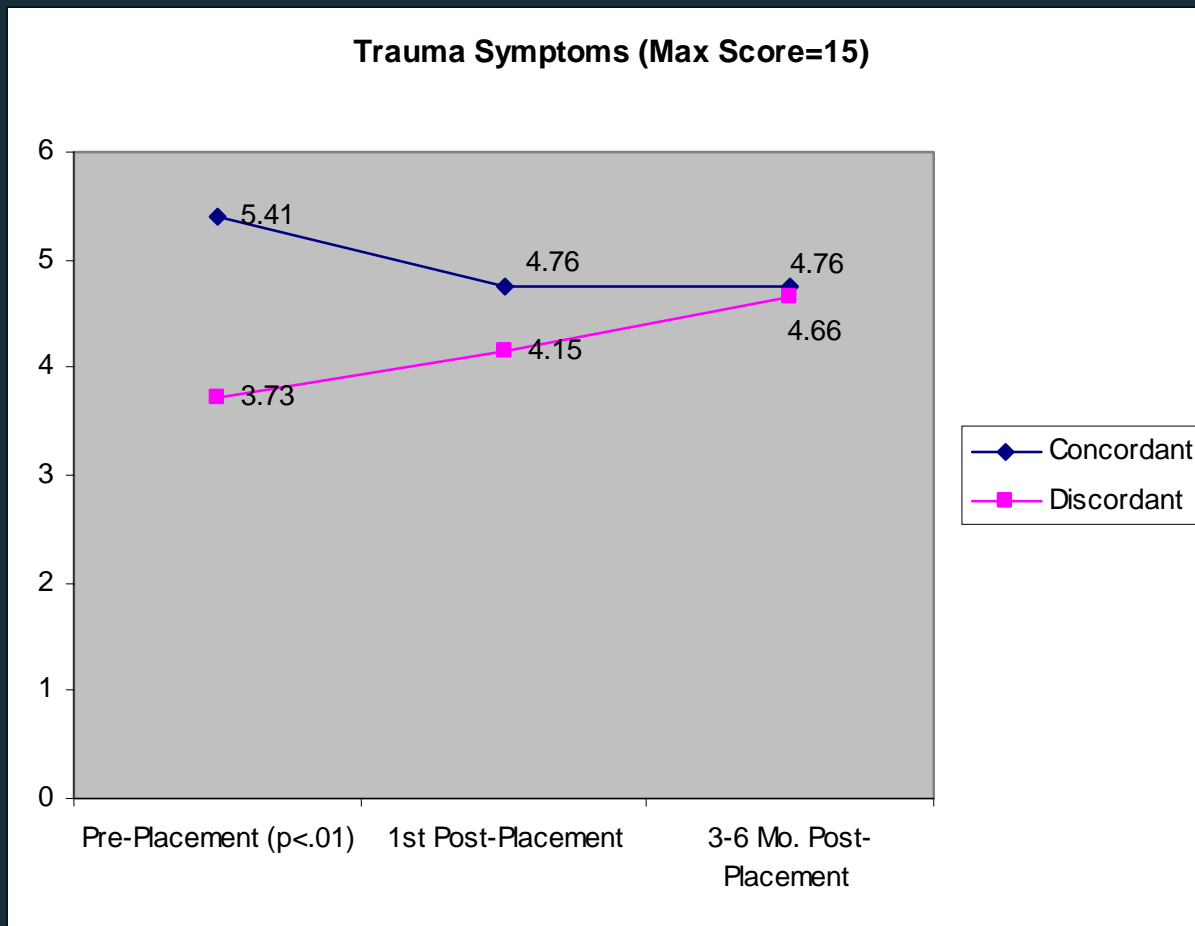
Overall

Trauma Symptoms+Child Behavioral/Emotional Needs+Child Risk Behaviors (Max Score=87)

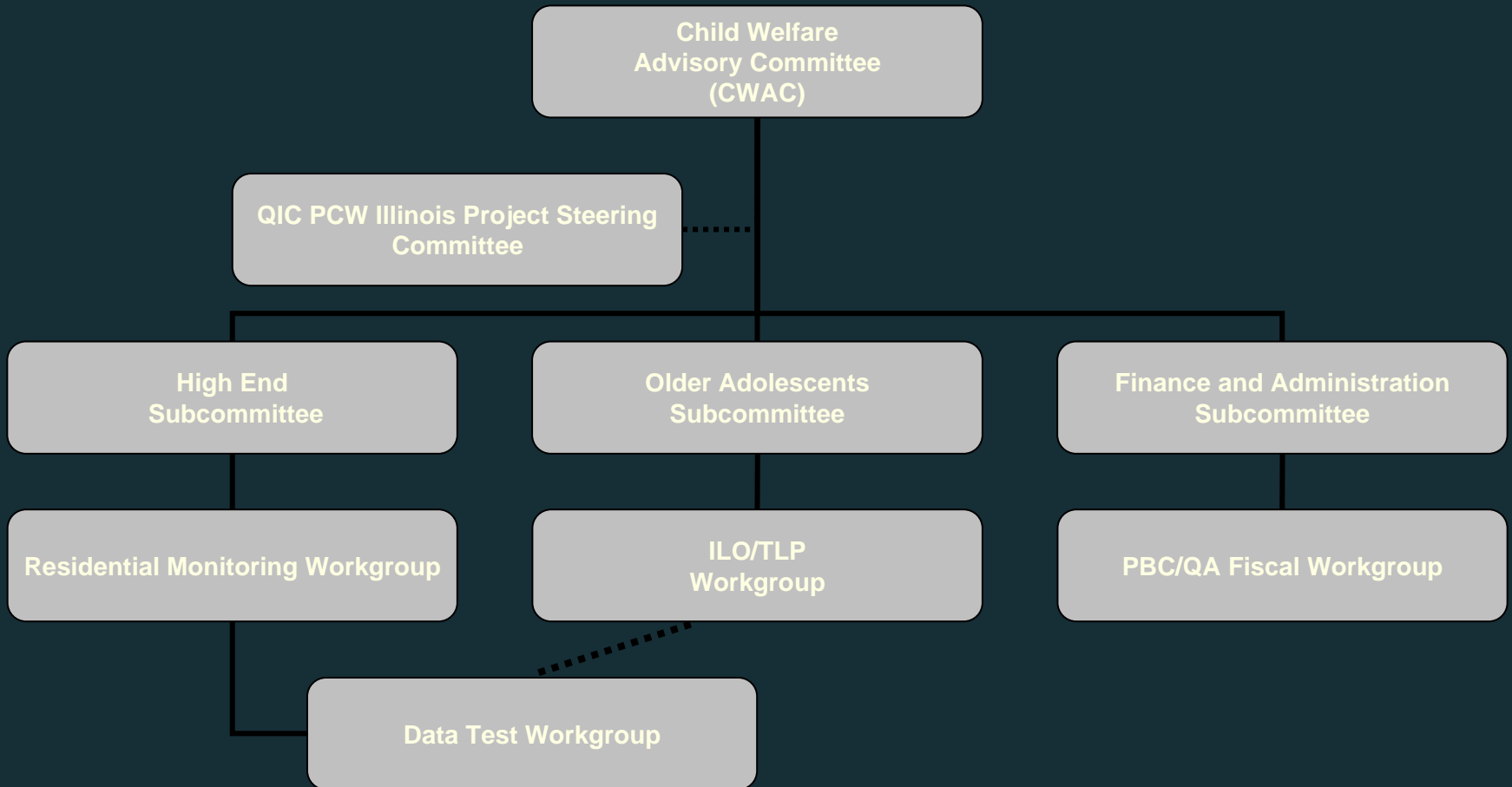


Change of CANS Domain Scores Over Time

□ Trauma Symptoms



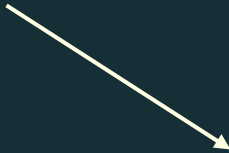
Illinois Child Welfare Advisory Committee (CWAC)



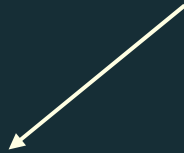
Goal 1:
Improve Safety/Stability
During Treatment



Goal 2:
Effectively and Efficiently
Reduce Symptoms/
Increase Functionality



Goal 3:
Improve Outcomes At
And Following
Discharge



Indicator:
Rate of Treatment
Opportunity Days

Indicator:
Sustained Favorable
Discharge Rate

Treatment Opportunity Days Rate

- ❑ Percentage of total days of care in a fiscal year that residents are not on the run, hospitalized, or incarcerated
- ❑ Calculated based on treatment “spells” from admission to discharge
- ❑ Agencies are guaranteed payment for 100% of DCFS client beds
- ❑ A “no decline” policy has been established
- ❑ Agencies will be fiscally penalized if they exceed performance benchmarks at rate of 25% of per diem payment for each day they exceed benchmark

Ongoing Evaluation: Division of Quality Assurance

Three Goals:

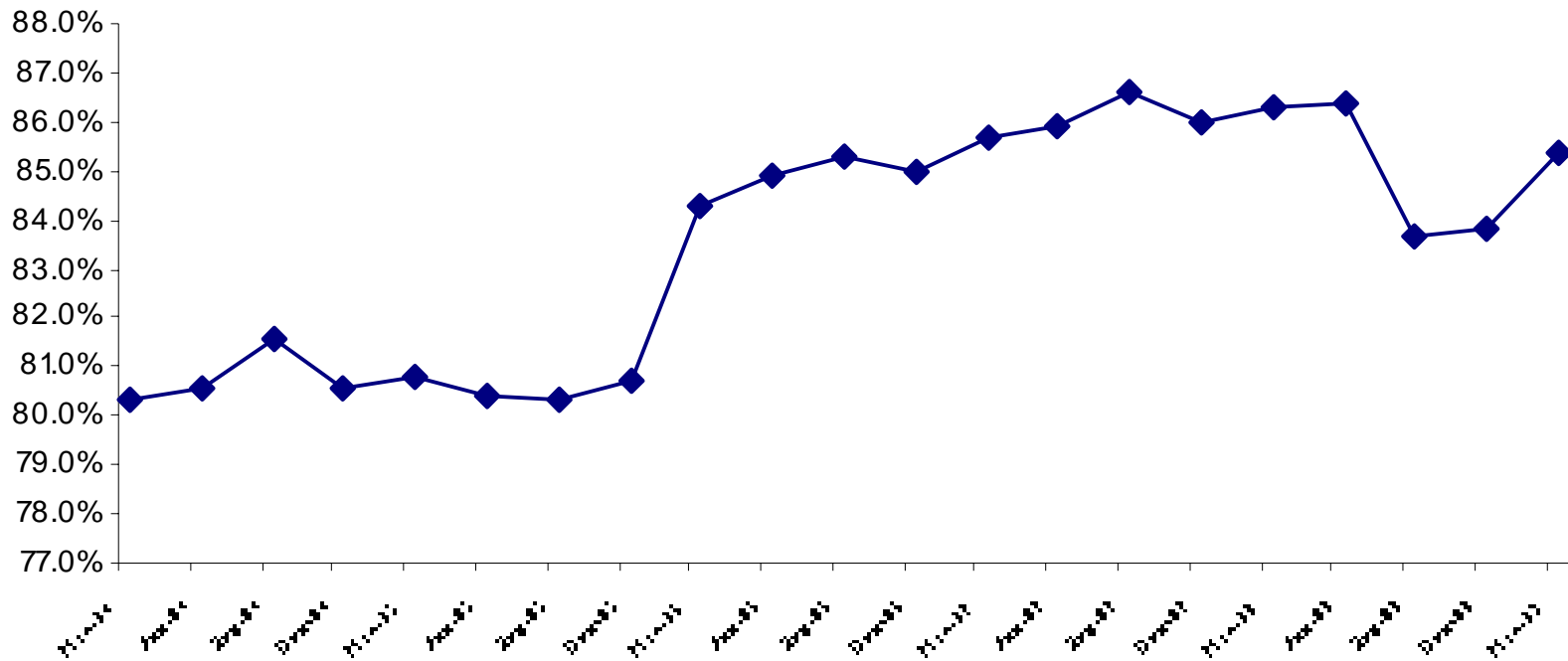
- Safety
- Permanency
- Well-Being

Many Specific Objectives:

- Reducing negative outcomes
- Increasing positive outcomes
- Observing progress over time

Permanency Measure #14:

14. Percent of Children w/ No More than 2 Placements During 1st Year in Care



Challenges to Implementing Evaluation

- Dependence on front-line staff for data collection/entry requires built-in incentives
- Systems develop in silos that impede efforts to share data to generate meaningful evaluation
- Buy-in at all levels requires universal understanding of the goals for transformation



Overcoming Challenges

- ❑ Provide benefits to front-line staff for using data collection systems – resources, reports, etc.
- ❑ Convene “summits” both for evaluators and practitioners to make meaning of research findings
- ❑ Communicate about the role of evaluation in transforming the system