
California Home Visiting Coordination Learning Network Session 6

November 22, 2021





Participation Reminders



Please use the chat feature to engage in discussion and to reach our support team with any technology questions.

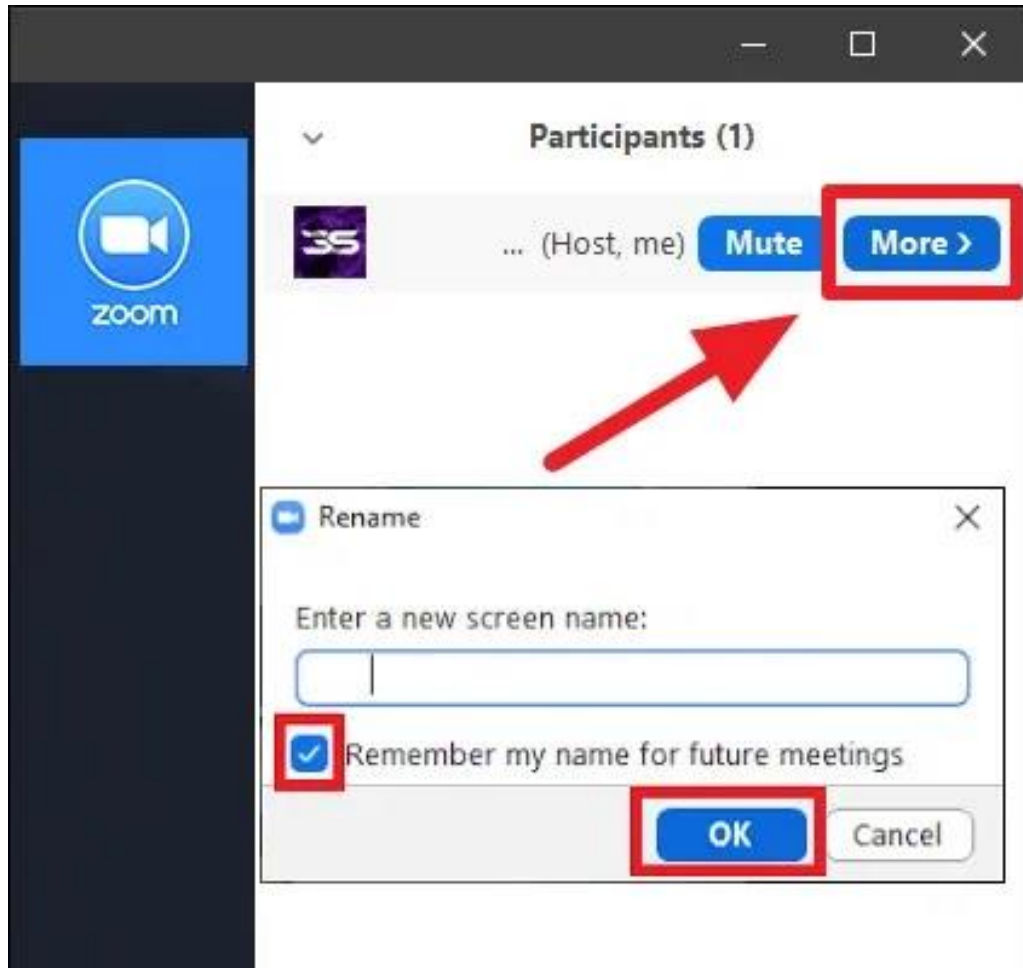


Please mute your computer speakers if you joined by phone and hear an echo.



If available, please turn your video on.

Rename Yourself in Zoom



OR



Example: Hannah, Fresno

Agenda

- Coordination framework
- Infrastructure domain
- Peer Spotlight – San Joaquin
- Peer Spotlight – Los Angeles
- Group breakout discussions
- Next steps



Coordination Framework



Service Coordination

Coordination between:

- HV programs
- HV and other family-serving organizations

Coordination is on a Continuum



Infrastructure

Reflections



Infrastructure: WHAT



Infrastructure

- **Governance & policies**
- **Referral systems**
- **Data collection & use**
- **Financing**
- **Workforce**

Data Features Among Counties in CA (n=50)

| Feature | Number of Counties | Percent of Counties |
|---|--------------------|---------------------|
| Engagement of stakeholders in collection and use of data | 19 | 38% |
| Use of data to drive resource allocation and strategic planning | 17 | 34% |
| Data sharing agreements between family serving organizations | 13 | 26% |
| Analysis of data across sectors to identify progress & challenges | 13 | 26% |
| Shared measures of maternal and child health and family well-being | 13 | 26% |
| Publicly available data dashboard to track and share population outcomes and systems performance | 13 | 26% |
| Quality improvement mechanisms that support family serving organizations to work collaboratively on the same indicators | 12 | 24% |

Coordinated Data Collection and Use: WHY



To reduce duplication, increase efficiency, assess systems outcomes.

Coordinated Data Collection and Use: HOW

| Examples: COLLECT Data | Examples: USE Data |
|--|---|
| <ul style="list-style-type: none">• Develop SMART goals and objectives for coordinated data collection | <ul style="list-style-type: none">• Develop SMART goals and objectives for coordinated data use |
| <ul style="list-style-type: none">• Identify and adopt shared metrics and measures | <ul style="list-style-type: none">• Develop data sharing agreements |
| <ul style="list-style-type: none">• Implement common identifier for each child and family | <ul style="list-style-type: none">• Review and analyze common data across agencies/sectors |
| <ul style="list-style-type: none">• Select or develop a centralized database or data management system | <ul style="list-style-type: none">• Align analysis and reporting practices |

Data Collection and Use: WHERE TO START?

- Develop **SMART goals** for data collection and use
 - Specific
 - Measurable
 - Achievable
 - Relevant
 - Time-bound
- Develop **data use agreements**

Shaw, S.H., Lin, V., & Maxwell, K.L. (2018). Guidelines for Developing Data Sharing Agreements to Use State Administrative Data for Early Care and Education Research. OPRE Research Brief #2018-67. Washington, DC: Office of Planning, Research and Evaluation, Administration for Children and Families, U.S. Department of Health and Human Services.

Data Use Agreements: WHAT

- Formal document between two or more entities that specifies the conditions under which data are to be shared and used.
- Protect confidential and sensitive information and comply with legal requirements (government, organizations)
- Can have different names: data sharing agreement, data transfer agreement, data use license, etc.

Data Use Agreements: HOW

- Identify past agreements used in your organization
- Clarify data needed to address questions related to coordination.
- Identify the organizations that own, oversee, or manage the data
- Work with someone who knows how to prepare a data use agreement (e.g., legal counsel) to develop a draft document

Shaw, S.H., Lin, V., & Maxwell, K.L. (2018). Guidelines for Developing Data Sharing Agreements to Use State Administrative Data for Early Care and Education Research. OPRE Research Brief #2018-67. Washington, DC: Office of Planning, Research and Evaluation, Administration for Children and Families, U.S. Department of Health and Human Services.

Peer Spotlights



Children and Families
Commission

Peer Spotlight
Coordination Learning
Network 11.22.21

Moving the HVC Work Forward

The HVC funding has allowed:

- Viewing home visitation as a system
- Allowing for dreaming of a future of data coordination throughout the county
- Planning for more effective opportunities in serving families
- Creating a home visitation strategic plan



Created by Muhammad Auns
from Noun Project



Created by kurakuricon
from Noun Project



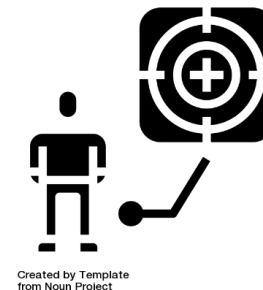
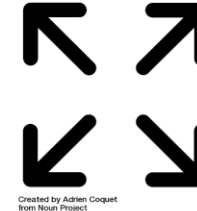
Created by Juicy Fish
from Noun Project

Database Pilot Project



First 5 San Joaquin (F5SJ) is looking at data collection and coordination as an iterative process

- Piloting FamilyWORKs in year 1
- Expanding to F5SJ programs for case and contract management
- Pursuing opportunities for other home visiting programs to use the system

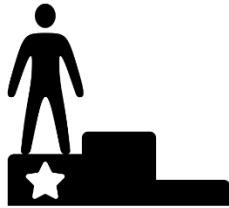


Database Pilot Project: Selection Process



Created by Justin Blake
from Noun Project

Approval by Commission on the process on September 30, 2021



Created by Lucas Helle
from Noun Project

Narrow down vendors from five to two



Created by Cuputo
from Noun Project

Review panel

Database Pilot Project: Selection Process

| | | | | | |
|---|-----------|---------|----------|-----------|-----------|
| Ability for Customization | 3 | 3 | 3 | 3 | 2 |
| Ability to meet State (CDSS and F5CA) reporting without making adjustments | 3 | 3 | 3 | 3 | 2 |
| Cloud or Web-based | 3 | 3 | 3 | 3 | 3 |
| Import Current Data | 3 | 3 | 3 | 3 | 1 |
| Mobile App | 3 | Unknown | 3 | 3 | Unknown |
| High Level of Security | 3 | 3 | 3 | 3 | 3 |
| Technical Assistance/Help Desk | 3 | 3 | 3 | 3 | 3 |
| Export Reports | 3 | 3 | 3 | 3 | 3 |
| User Friendly/Intuitive | 3 | 3 | 3 | 3 | 3 |
| Referral Tracking | 3 | 3 | 3 | 3 | 3 |
| Supervision/Quality Assurance | 3 | 3 | 3 | 3 | 3 |
| Capability | 3 | 1 | 2 | 3 | 2 |
| TOTAL Year 1 Pilot Cost for FamilyWORKs with 40 users | \$76,996 | Unknown | \$15,250 | \$51,474 | \$165,000 |
| TOTAL Year 2 Cost for Expansion with all funded agreements and Contract Management capability | \$151,503 | Unknown | \$50,750 | \$191,474 | \$175,000 |
| Timely response to F5SJ staff | 3 | 3 | 3 | 2 | 2 |
| Other First 5 Commissions have experience with Case Management/Contract Management system | Yes | Yes | Yes | Yes | No |

Lessons Learned

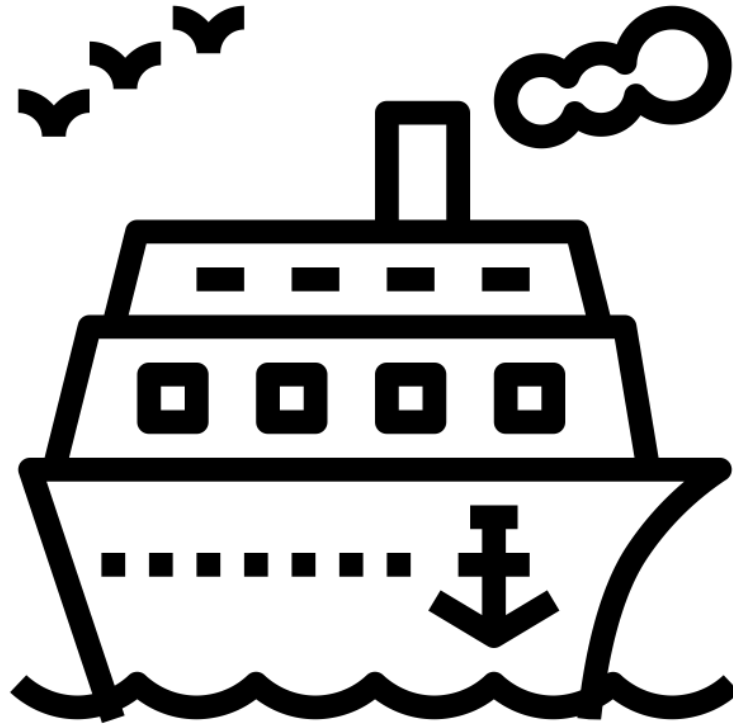


Through the process of selecting a Database, First 5 San Joaquin uncovered some Hints and Indications of “What’s to Come”.

- Timely response to requests
- Thorough response to requests
- Clear and direct communication

Anything less, consider making a change sooner than later in the process.

Next Steps for Lani



Created by Massupa Kaewgahya
from Noun Project

Next Steps for

First 5 San Joaquin



Present Hubbe to Commission for approval in December as the pilot database for FamilyWORKs (selected by eight of nine review panelists as first choice)



Establish a committee to work with Hubbe on the build out of the database for FamilyWORKs



Expand the database to additional F5SJ programs (if successful), and add a contract management component



Pursue opportunities for coordination among other non-F5SJ home visiting programs

For More Information...

Visit us at
www.sjckids.org

Email us at
sjckids@sjgov.org

Call us at
(209) 953-5437

Follow us on



Jovanna Vialdores at jvialdores@sjgov.org
Billi Jo Zopfi at bzopfi@sjgov.org



A close-up photograph of a young Black baby with curly hair, wearing a yellow headband with a flower and a white shirt with black polka dots and a yellow collar. The baby is smiling broadly. In the background, there is a large, faint watermark of a hand with the number 5.

Questions?

FIRST5
San Joaquin 

Reflection



Los Angeles: Home Visitation Data Collection & Sharing



LA County Home Visiting System

Home Visiting History:

- Department of Public Health: Began Nurse Family Partnership in 1997
- First 5 LA:
 - Initial, time-limited home visiting grants in 2001
 - Welcome Baby pilot in 2009 and expansion in 2013
 - Expanded to Healthy Families America (HFA) and Parents As Teachers (PAT) in 2014
- Department of Public Health expanded home visiting to HFA and PAT in 2018, expanding team size in same agencies funded by First 5 LA
- Currently, LA County has eight program models available to meet family needs

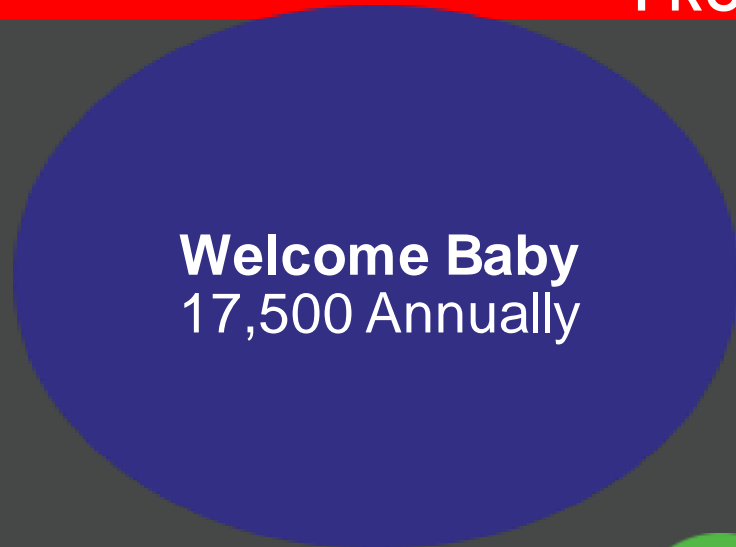


Home Visiting Models in LA County: Intensity and Funding Source

LOW TOUCH

HIGH TOUCH

PROGRAM INTENSITY



FUNDED BY:



Los Angeles County



First 5 LA



Federal



State

LA County Home Visiting System

Key Infrastructure & Quality System Supports:

- Los Angeles Best Babies Network (LABBN)
 - Cohort and Peer to Peer Trainings
 - Continuous Quality Improvement
 - Programmatic Monitoring (fidelity)
 - Technical Assistance
 - Database Oversight and Development
- Home visiting workforce of over 550 qualified professionals delivering services to nearly 20,000 clients per year



Stronger Families Database System

- First 5 LA selected database vendor via competitive solicitation process in 2009: NetChemistry
- Established Hospital Data Feed for Welcome Baby providers
- Web-based data system
- Provides case management, data and outcome reporting capacity and referral capacity between providers in network
- Database connected to Tableau with ability to create dashboards and reports at provider level
- Utilized across three program models by over 35 entities (hospitals and CBOs) with multiple funding streams, including: F5LA, Departments of Public Health, Mental Health, Social Services and California Home Visiting Program funds



Family Strengthening Network

Roles and Responsibilities

F5LA

ROLE:

- Funder: Welcome Baby, HFA, PAT
- Grantee Oversight
- Infrastructure Support, including LABBN, Database, Home Visitation Consortium

LABBN

ROLE:

- Funding from F5LA and DPH
- Programmatic, training, and technical assistance provider
- Database training and oversight
- Home Visitation Consortium Coordinators

DPH

ROLE:

- Funding Administrator for Federal, State and Local Funding for NFP, HFA, PAT
- Grantee oversight

- F5LA and DPH fund the same 17 HFA and PAT agencies
- Monthly joint planning meetings to ensure coordination and standardized implementation
- LABBN conducts monthly grantee meetings to communicate updates and maintain consistent messaging

Family Strengthening Network

CQI and Monitoring

Data Collection

- Centralized Database across HFA and PAT funding streams
- Database User Manuals
- Database User Groups and Trainings

Model Fidelity

- Support adherence to each program model's fidelity
- LABBN and individual agencies have access to data reports to track goals and indicators

Feedback Loop

- Conduct surveys to identify technical assistance needs
- LABBN hosts monthly meetings to identify trends, provide training and TA
- Elevate successful strategies and work with sites for identified improvements

Family Strengthening Network

Fidelity Indicators and Outcomes

Fidelity Indicators

- Caseload
- Enrollment rate
- Retention
- Completed Visits
- Completion Rate
- Time in Program
- First visit time frame
- Screeners completed: PHQ, GAD-7, ASQ

Outcomes

- Depression
- Anxiety
- Parents Assessment of Protective Factors
- Exclusive breastfeeding
- Family Competency (Life Skills Progression tool)
- Parent's Assessment of Protective Factors (PAPF)

Data Filters

- Home Visitor
- Demographics
- Risk level
- Agency

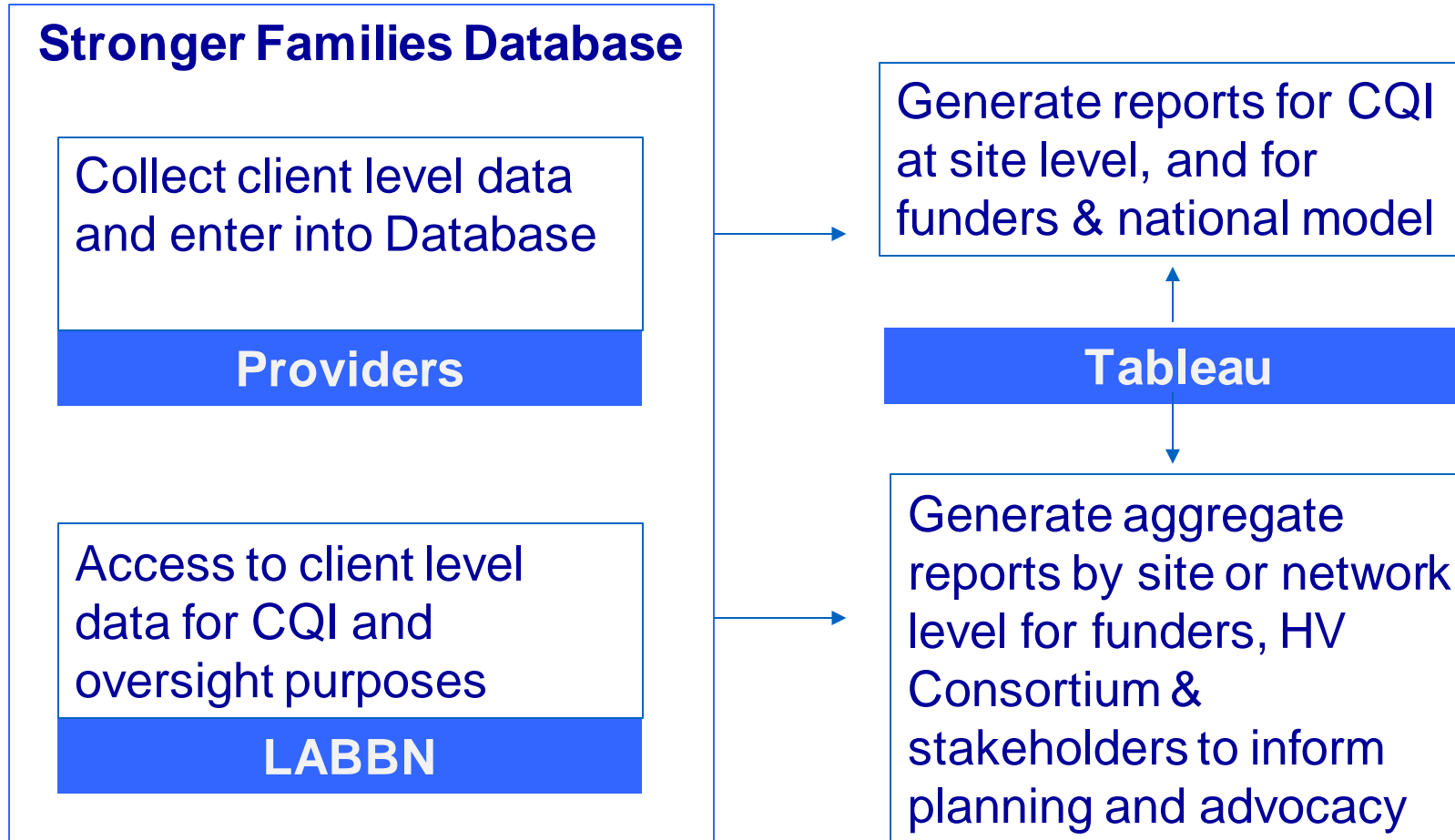
Family Strengthening Network

Data Agreements

- Lack of a contract between LABBN and DPH resulted in initial challenges and limitations on data sharing practices
 - DPH relies on sites for data reports, leading to delays and increased work burden for DPH staff compiling data for State
- CalWORKS evaluation required client-level data for CDSS
 - F5LA owned database housing CDSS client data and did not have an MOU/agreement with DPH outlining data sharing practices
 - Had to involve legal counsel from F5LA and DPH to facilitate process
- Modifying Data Sharing Practices and Agreements

Family Strengthening Network

Data Sharing Practices



- Funders can request aggregate level data by funding source, program model, site level or network-wide
- Funders do not have access to client-level data without appropriate consents
- Developing a Master Data Authorization form across funding streams

Family Strengthening Network

Lessons Learned

- Alignment of funder requirements and data expectations at system level, including appropriate data sharing consents (client-level) and agreements (funder-level)
- Utilization of common database platform across funding streams provides unique advantages - and a need to explore interfaces with other platforms
- Coordination and relationship-building between funders at leadership and implementation levels
- Dedicated data support staff at provider level for quality control and data accuracy
- Focus on context of data – particularly important in pandemic, where numbers have a story to tell!

Contacts:

Diana Careaga

**Director of Family Supports
First 5 LA**

dcareaga@first5la.org

Sharlene Gozalians

**Director, LA Best Babies
Network**

sgozalians@labestbabies.org



Q&A



Breakout Group Discussions

Group Discussion Topics

- What challenges have you had using and sharing data for coordination?
- What is working well to collect and share data for coordination?
- What resources or support might you need to strengthen your ability to collect, use, and share data to support your coordination efforts?

Next Steps

HVC TA Liaisons



Heather Johnson

johnson@jbassoc.com

Southern Region



Leah Childress

childress@jbassoc.com

Sacramento Region

Northwest Region



Hannah Simmons

simmons@jbassoc.com

Central Region



Colleen Morrison

morrison@jbassoc.com

Bay Area Region

Northeast Region



Katie Brennan

brennan@jbassoc.com

Select counties in Central,
Northwest, and Southern
Regions

Next Steps

- Follow-up email with:
 - Post-session survey
 - Slide deck and breakout discussion notes
- Session 7 on Jan 24, 2022
 - Topic: Infrastructure (processes for coordinated recruitment, intake, and referral systems)
 - Please email simmons@jbassoc.com with any questions you have in advance

Thank You!

Hannah Simmons

(703) 247-2623

simmons@jbassoc.com

www.jbassoc.com

