

Environmental Scan Data Sources

California Home Visiting Coordination Project

February 2021

Overview

This resource includes a list of data sources counties may want to use when conducting their environmental scan to inform action plan development for home visiting coordination. Prior guidance on conducting an action plan provided by F5CA can be found on their website: [Considerations for Action Plan Development](#).

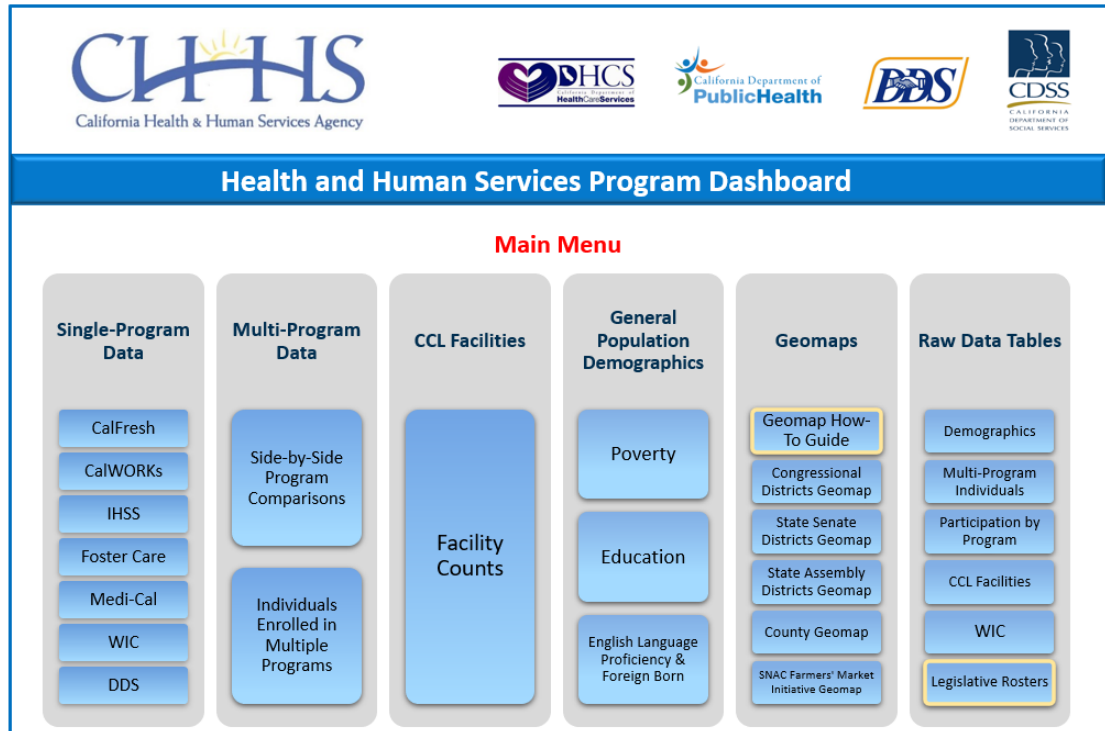
Counties may already have data accessible from existing reports to state agencies for the California Home Visiting Program, CalWORKs Home Visiting Program, and the First 5 Annual Report that may be useful for the environmental scan. The list below includes county-level data sources for identifying community risks and needs. Counties may choose one or more of the sources below depending on what is most useful for their community.

California Open Data Portal

The Government Operations (GovOps) Agency sponsors the [statewide open data portal](#). Open data includes public information collected by various state agencies through business activities. The data can be downloaded and combined with other data sources.

- [COVID-19](#)
 - Testing, cases, homeless impact
- [Health and Human Services Dashboard](#)
 - If you want to see the dashboard you need to download the excel file. Includes county level data in the areas displayed in the screenshot below.





Maternal and Child Health Data

- [California Child Welfare Indicators Project](#)
 - This project is a collaboration between the UC Berkeley School of Social Welfare and the California Department of Social Services. Available data includes county-level child maltreatment and foster care rates.
- [California County Scorecard of Children's Well-Being](#)
 - This interactive tool published by Children Now provides a snapshot of children's health, education and welfare over time and by racial and ethnic groups. County data can be downloaded into a pdf report card.
- [California Maternal and Infant Health Assessment \(MIHA\)](#)
 - Annual survey of women in California who have given birth in the last year conducted by the California Department of Public Health, Maternal, Child and Adolescent Health Division. The MIHA [data and reports](#) section has county and regional data snapshots that can be downloaded.

Social Determinants of Health Indicators

- [California Healthy Places Index \(HPI\)](#)
 - Developed by the Public Health Alliance of Southern California to assist in [exploring](#) and comparing community conditions across the state. The HPI provides a single score for each census tract that combines 25 weighted community health indicators.

- [California Home Visiting Supply & Demand Tracker](#)
 - Developed by Child Trends as part of the California Home Visiting Workforce Project, the Supply & Demand Tracker utilizes survey data to estimate supply, and census and various California departmental data to estimate demand. The tool can inform home visiting policy and program decisions and assist in aligning service coordination for families.
- [CDC's Social Vulnerability Index \(SVI\)](#)
 - The SVI utilizes uses 15 social indicators from the U.S. Census to identify communities that are socially vulnerable and may need support before, during, or after disasters.
- [COVID-19: Statewide Vulnerability & Recovery Index](#)
 - A tool developed by Advancement Project California as part of the RACE COUNTS initiative to inform equity-based resource allocation post COVID-19 pandemic. The index is made up of three component scores—risk, severity and recover need that are then weighted and aggregated at the zip code level.
- [Eviction Lab](#)
 - Princeton University's nationwide database of evictions that utilizes census data, court reports, and public eviction records to provide eviction rates by county.
- [Healthy Communities Data and Indicators Project](#)
 - Created by the California Department of Public Health, Office of Health Equity, the project provides a standardized set of measures on the social determinants of health in California. The majority of datasets here can also be found on the [California Health and Human Services Open Data Portal](#).
- [Kids Count Data Center](#)
 - A project of the Annie E. Casey Foundation, the Kids Count Data Center provides county-level data from national, state and local data sources regarding family and child well-being.
- [RWJF County Health Rankings](#)
 - The County Health Rankings, a collaboration between the Robert Wood Johnson Foundation and the University of Wisconsin Population Health Institute, measure the health of nearly all counties in the nation and rank them within their state.
- [Strong Start Index \(SSI\)](#)
 - First 5 Association of California and Children's Data Network at the University of Southern California launched the SSI to help policymakers and service providers support children more effectively. The tool uses information collected at birth from every child in the state.
 - Example of [First 5 Sonoma](#) using the SSI.

- [UCSF Health Atlas](#)
 - The Health Atlas project was created by the UCSF School of Medicine Dean's Office of Population Health and Health Equity. Data included are from various domains of social determinants of health and related health outcomes.

This resource was prepared for F5CA by James Bell Associates in partnership with Johns Hopkins University Bloomberg School of Public Health, under Contract No. CFF 7585.