
Leveraging Funding to Support and Sustain Home Visiting: Session 4

March 7, 2022



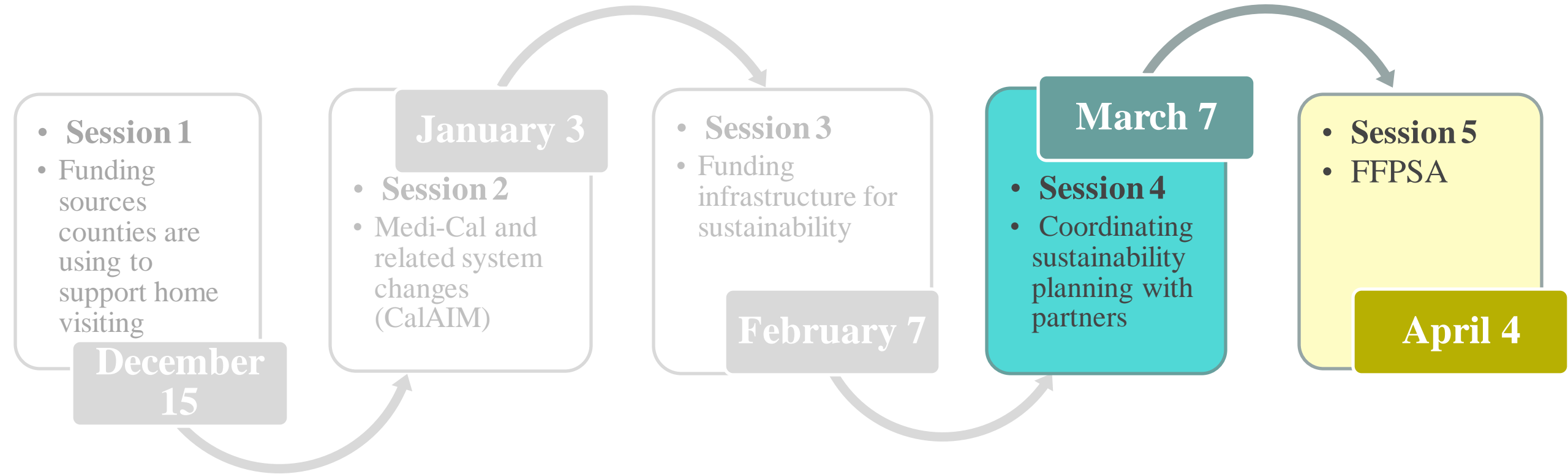


Welcome!

Introductions – please share your name, county, and role

Briefly describe one recent "win" - professional or personal!

Leveraging Funding TA Roadmap



Coordinating Sustainability Planning with Partners

- Relationship building for funding
- Governance structures for ongoing sustainability



Building Relationships for Funding

County Perspectives on Building Relationships for Funding

- Hector Gutierrez, Kern County
- Cherie Fields, San Luis Obispo County
- Jeanna Capito, Prenatal to Five Fiscal Strategies



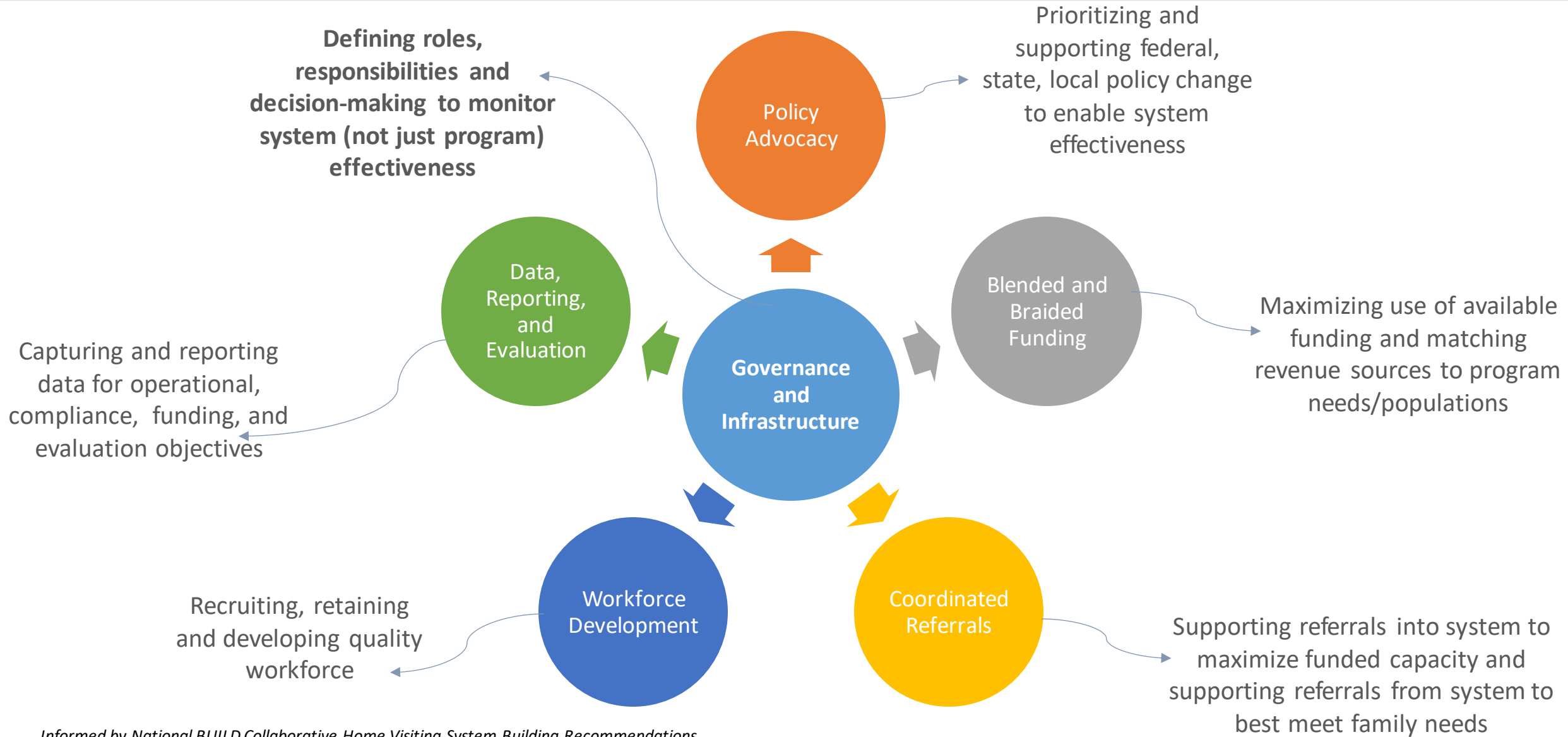
Governance Structures for Sustainability

Building an integrated system for home visiting requires coordination of multiple workstreams



Informed by National BUILD Collaborative Home Visiting System Building Recommendations. See Appendix for further information on each element.

■ **Building an integrated system for home visiting requires coordination of multiple infrastructure elements**



Informed by National BUILD Collaborative Home Visiting System Building Recommendations

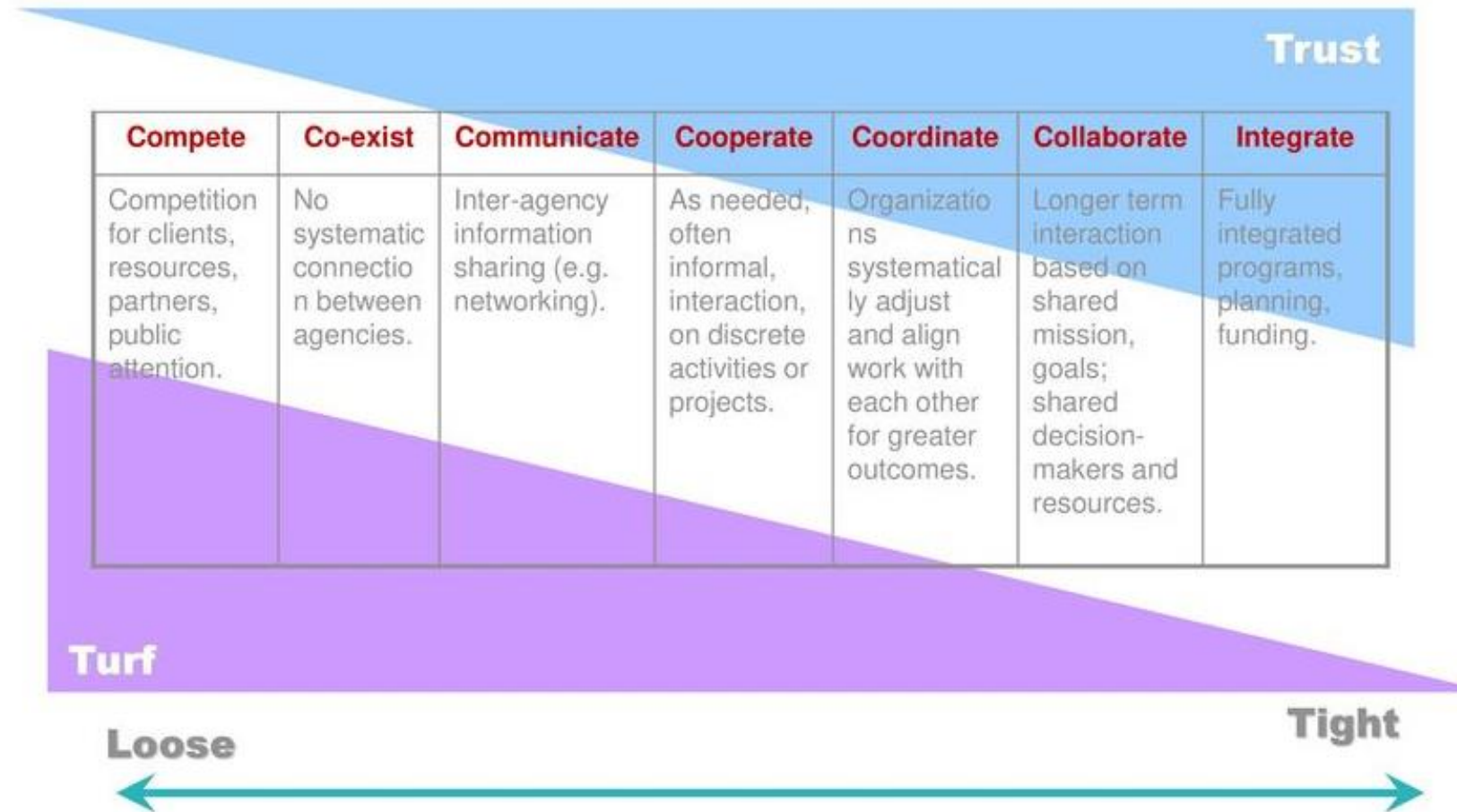
What Do We Mean by Countywide Governance Structure?

A decision-making structure that facilitates and enables the coordination and maximum utilization of available funding sources

- Why is it important?
 - Home Visiting is supported by multiple, siloed funding streams and policy requirements. Coordination at the local level is necessary to make the transition from “programs” to a “system of care”
- Models for Governance have ***defined leadership roles, decision-making, and accountabilities***
 - Collaborative/Shared Leadership
 - Delegated backbone entity
 - Lead agency with advisory groups

Assessing your Governance Structure

The Collaboration Spectrum



Example: North Carolina Smart Start

- Challenges:
 - Patchwork of home visiting services exists across the state and some areas have limited or no services.
 - Multiple federal, state, and philanthropy funding results in funding and service silos and are not integrated into a larger early childhood system.
 - Lack of coordination makes it difficult, if not impossible, to ensure that home visiting resources are equitably and sufficiently available throughout the state, and that parents are aware of available services.

Example: North Carolina Smart Start

- Action Plan
 - Coordinated leadership model and governance model
 - Relies on Smart Start as a backbone organization and a dedicated Home Visiting Parent Education System Director to ensure system accountability
 - Includes programs, funders, prenatal to eight agencies, communities and families, use a systems approach to support multi-model, locally variable implementation and cross sector engagement
 - Includes focus on reducing administrative burden through common reporting

WHY SMART START WORKS:

The North Carolina Partnership for Children and Local Smart Start Partnerships



STATE-WIDE GOVERNANCE AND INNOVATION WITH LOCAL INSPIRATION

Smart Start is a network of 75 nonprofit local partnerships led by The North Carolina Partnership for Children, Inc (NCPC). NCPC works to ensure strong fiscal and programmatic oversight and the local partnerships serve all 100 North Carolina counties and are an engaged and important part of local communities.

The Smart Start Network



WORKING IN OUR LOCAL COMMUNITIES ACROSS NORTH CAROLINA

Guilford County Partnership for Children



Because of Shape NC, a program tackling childhood obesity, children go outside ready to be engaged at Friendly Avenue Preschool in Greensboro, NC. Parents are in disbelief when they find out that their children are trying new veggies straight from the garden and they inquire how they can encourage similar practices at home.

Down East Partnership for Children

Parents and children receiving subsidy scholarships in Nash and Edgecombe Counties are provided access to high quality child care. As part of the subsidy program requirements, parents participate in parent engagement activities like volunteering at their child's center, visiting the library and/or attending parent education sessions.



Madison County Partnership for Children

Children in Madison County receive

Brunswick County Partnership for Children

In addition to learning about child

Example: Orange County

- Challenges
 - Multiple funding sources and inconsistent utilization resulting in some families on waitlist and some programs with “underutilization of existing capacity”
 - Complexities for providers in billing and service coordination
 - Target: increase engagement and better utilization of existing services

Example: Orange County

- Action Plan
 - Regularly convene key leaders from County agencies, First 5, Medi-Cal managed care, and Head Start
 - Prioritize a limited number of strategies for implementation and testing in FY 22-23
 - Not ready for shared measures, system evaluation or formal decision-structure

Discussion

Discussion Questions

- Where are you in creating a countywide governance structure?
- What progresses and challenges have you had in building local county governance structures?
- What steps could you take to coordinate funding through your county's governance structure?

Thank You!

Katie Brennan

Brennan@jbassoc.com

(703) 552-9098

www.jbassoc.com

